

[ChooseHotTubsDirect.com](http://ChooseHotTubsDirect.com)

767 Bryant St. #201, San Francisco, CA 94107

Phone: +1-415-618-0681 Fax: 1-415-618-0682 Email: [service@choosedirect.com](mailto:service@choosedirect.com)

---

## Cleaning: TV Interiors

1. If there is dust or dirt in the inside of the TV shell/screen, do the following.



2. Remove screws from TV shell. You can either do this from inside the cabinetry as shown above, or when the TV is fully up on the outside of the shell as shown below. There are four screws total (2 on each side) on the bottom or base of the TV shell.



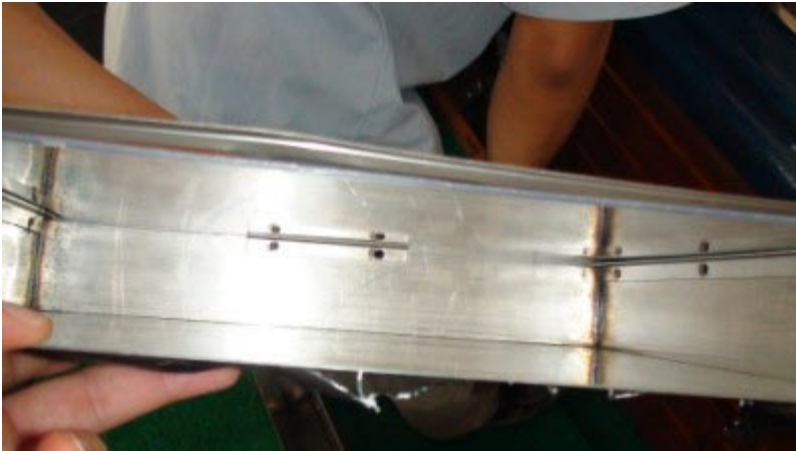


[ChooseHotTubsDirect.com](http://ChooseHotTubsDirect.com)

767 Bryant St. #201, San Francisco, CA 94107

Phone: +1-415-618-0681 Fax: 1-415-618-0682 Email: [service@choosedirect.com](mailto:service@choosedirect.com)

---



3. Now you can remove the TV shell, and clean the inside. Then put the cover back on and fasten the screws.